

RED INDICATES ORIGINAL

DATA CONTAINED IN THIS DOCUMENT IS PROPRIETARY TO TROMPETER ELECTRONICS INC. AND SHALL NOT BE DISCLOSED, COPIED OR USED FOR PROCUREMENT OR MANUFACTURE WITHOUT EXPRESS WRITTEN PERMISSION.

REVISIONS			305-0352		SH 1
REV	EO	DESCRIPTION	DWN	APPROVED	DATE
C	12040	-32 WAS -29; UPDATED & REDRAWN; DWG NO WAS 3005-0352; SEE ECD	DKC	<i>Bm</i> , <i>18M.</i>	7/22/97

DASH NO	CONNECTOR TYPE	MATERIAL \triangle	ASSEMBLE PER	FIG	MTG HOLE FIG
-1	PL75	310-0002-32	\triangle	1A	—
-2	CJ70	3-0043-32		2A	—
-3	BJ79	3-0018-32		3A	10
-4	BJ74	3-0055-32		4A	11
-5(S)	PL375(S)	315-0011-32		1B	—
-6(S)	CJ370(S)	3-0066-32		2B	—
-7(S)	BJ379(S)	3-0074-32		3B	10
-8(S)	BJ374(S)	3-0073-32		4B	11
-9	PL74	310-0025-32		5A	—
-10	CJ70TL	3-0217-32		6A	—
-11	BJ79TL	3-0112-32		7A	10
-12	BJ74TL	3-0105-32		8A	11
-13	PL75FL	310-0006-32		5B	—
-14	CJ70FL	3-0101-32		6B	—
-15	BJ79FL	3-0052-32		7B	10
-16	BJ74FL	3-0099-32		8B	11
-17	PL73	310-0038-32		9	—

FIG 1

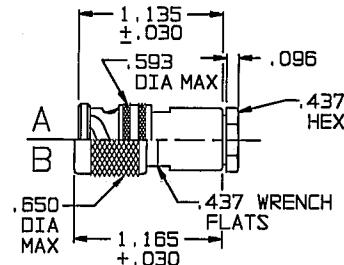


FIG 2

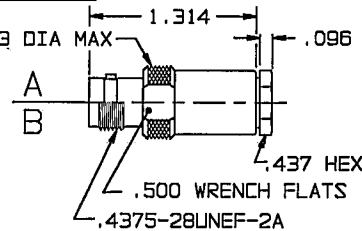


FIG 3

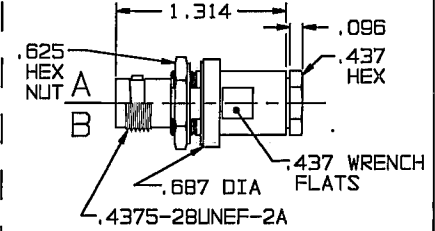


FIG 4

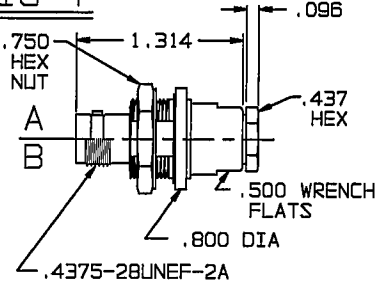


FIG 5

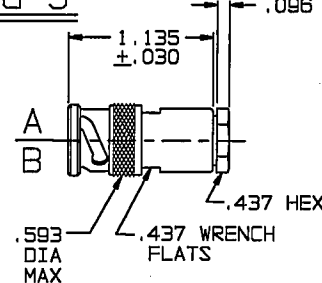


FIG 6

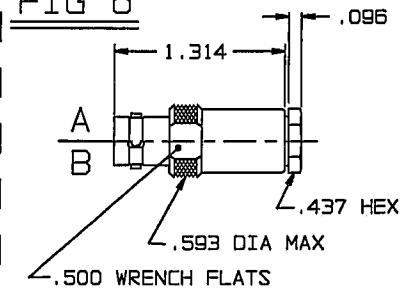


FIG 10

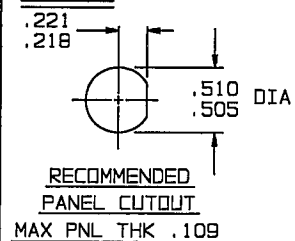


FIG 11

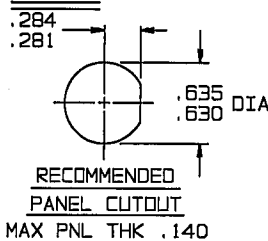


FIG 7

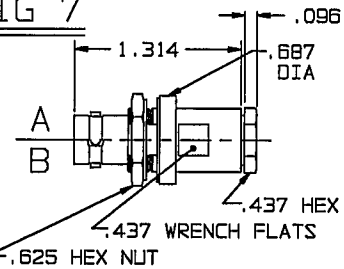


FIG 8

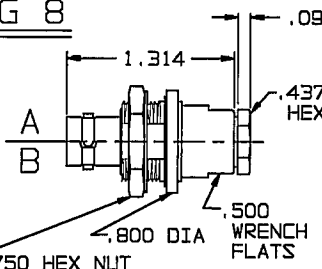
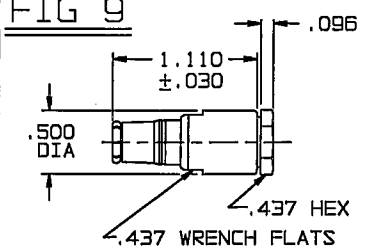


FIG 9



△ EXAMPLE OF COMPLETE P/N:
 305-0352-1 T S
 BASIC PART CONNECTOR NO. TYPE DASH NO. | OPTIONAL SAFETY WIRE HOLE (-5 THRU -8 ONLY) SEE NOTE **△**

- △** SUPPLY 1 EACH OF -101 SHRINK TUBING WITH EACH CONNECTOR
3. CONCENTRIC TWINAX/TRIAX, 2-LUG, 3-LUG, 4-LUG AND THREADED CABLE PLUGS/RECEPTACLES, INSULATED & NONINSULATED BULKHEAD MOUNT RECEPTACLES & PUSH-ON CABLE PLUGS FOR RAYCHEM CABLE #10595
2. FINISH TFS-1A (NICKEL)
1. ALL DIM ARE IN INCHES

- △** POLERIZATION LETTER I.A.W MATERIAL CALL-OUT, NONE REQUIRED FOR STANDARD
- △** PLACE CLAMP NUT, THEN SHRINK TUBING ONTO CABLE AND ASSEMBLE PER TAI-184

QTY	DESCRIPTION	PART NUMBER	ITEM
TOL UNLESS SPECIFIED .XX ± .XXX ± .005 .XXXX ± ANGLES ±	TROMPETER ELECTRONICS, INC.	"70" SERIES-10595	
DWN DKC 6-25-97	MATERIAL	CODE IDENT	DRAWING NO.
CHK <i>Bm</i> 7-2-97		14949	305-0352
ENGR	SCALE	DATE 8-14-78	SHEET 1 OF 2
APPR <i>18M.</i> 7/8/97			REV C